



INSTALLATION GUIDE

PART NUMBER: 5570 REAR ANTI-SWAY BAR

BUICK SKYLARK | 1964-1972
CHEVROLET CHEVELLE | 1964-1972
CHEVROLET EL CAMINO | 1964-1972
CHEVROLET MALIBU | 1967-1972

CHEVROLET MONTE CARLO | 1970-1972
OLDSMOBILE CUTLASS | 1968-1987
PONTIAC GTO | 1964-1972
PONTIAC LEMANS | 1964-1972

300 W. PONTIAC WAY. CLOVIS, CA 93612
PHONE: 800-445-3767 | EMAIL: INFO@BELLTECH.COM

THANK YOU

Thank you for choosing our high quality Belltech product. We have spent a great deal of time developing our line of products so that you will receive maximum performance with minimal difficulty during installation. Soon your vehicle will be on the road looking and feeling much improved.

Please take a moment to read all instructions and warnings prior to installation of your new Belltech product and before operating your vehicle. If you have any questions or concerns regarding any step in the installation process, please do not hesitate to call or email our customer support specialists who are trained to help you through any portion of this process.

Before You Begin:

It is of the utmost importance that you confirm all the components listed on the parts list are in the kit. You can find this list located on the last page(s) of your instructions. Do not begin installation if any part is missing. Instead, please call our Belltech customer service specialists.

Belltech Customer Support:

Phone: 1-800-445-3767

Email: info@belltech.com

Safety Information:

Warning: Do not work under a vehicle supported only by a jack. Place support stands securely under the vehicle in the manufacturer's specified locations unless otherwise instructed.

Proper use of safety equipment and eye/face/hand protection is necessary when performing any of the following instructions.

We strive for an exceptional experience for all our valued customers. If for any reason you need assistance with your Belltech products, please do not return the product to the store you purchased from, but rather call our dedicated customer service experts, from 7am to 5pm PST.

We recommend that a qualified mechanic, in a properly equipped facility, perform this installation.

It is very helpful to have an assistant available during installation.

Before Driving Your Vehicle:

It is important to double check all brake hoses, cables, and other components to be sure there is no interference. You must also check for wheel/tire to chassis/body interference. If any issues are found, review your installation instructions to be sure no steps were missed, and any problems are corrected.

Make sure your vehicle is aligned immediately following installation.

Check all hardware and torque at intervals for the first 10, 100, and 1000 miles.

Some of Belltech's products are designed to improve your vehicle's off-road performance. Leveling/lifting your vehicle may result in an altered center of gravity. It is crucial to use extreme care when operating your vehicle to prevent rollover and/or loss of control.

Any changes in your vehicle's suspension may result in transformed handleability. Please test-drive your vehicle in a remote location so you can become accustomed to the revised driving characteristics.

Perform headlight check and adjustment.

Failure to drive any modified vehicle in a safe manner may result in harm or death.

Never operate your modified vehicle under the influence of drugs, alcohol, or lack of adequate sleep.

Always wear your seatbelt.



DIFFICULTY:



INSTALLATION TIME: 1 Hour

RECOMMENDED TOOLS:

- Properly rated floor jack
- Support stands
- Wheel chocks
- Drill with drill bit set
- Metric and standard socket wrench set
- Metric and standard wrench set
- Safety glasses
- Torque wrench rated up to 100 ft lbs.

JACKING, SUPPORTING, AND PREPARING THE VEHICLE

1. Park your vehicle on a smooth, level, concrete, or seasoned asphalt surface.
2. Block the front wheels of the vehicle using wheel chocks. Make sure the vehicle's transmission is in "PARK" (automatic) or first gear (manual).
3. Activate the parking brake.
4. Loosen, but do not remove, the rear wheel lug nuts.
5. Lift the rear of the vehicle off the ground using a properly rated floor jack. Lift the vehicle so the rear tires are approximately 6-8 inches off the ground.
6. Place support stands rated for the vehicle's weight. The stands must be positioned in the factory specified locations. (Refer to the owner's manual). Prior to lowering the vehicle onto stands, make sure the support stands will contact the chassis. It is very important that the vehicle is properly supported to prevent any harm to oneself or to the vehicle.
7. Lower the vehicle slowly onto the stands.
8. Remove the rear wheels.

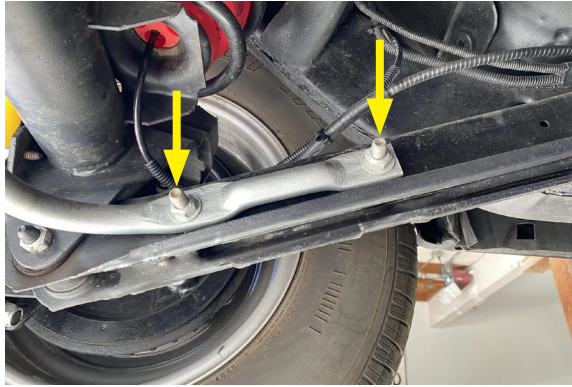


Technician reminder:

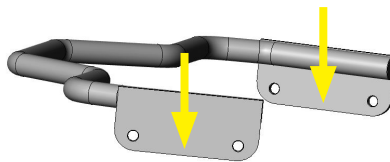
Never work under a vehicle supported only by a jack. It is necessary to place support stands securely under the vehicle in the manufacturer's specified locations unless otherwise instructed.

ORIGINAL SWAY BAR REMOVAL

9. Locate and remove the four bolts that secure the original sway bar to the control arms. Detach the sway bar from the vehicle.



10. There must be two sets of mounting holes on each lower control arm. If your vehicle was not originally equipped with a sway bar, the holes will need to be drilled.
11. Position the Belltech sway bar under the vehicle, between the control arms, with the brackets at the ends pointing down.



12. The distances must be 4-1/2" from the axle bolt to the first bolt hole and 6" to the second bolt hole. Mark the control arm where the bolts will go through, on both sides. Remove the Belltech sway bar. Center punch and drill the marked 1/2" holes. Ensure a 1/2" bolt supplied with the kit is able to go into each hole. Adjust the diameter if necessary.

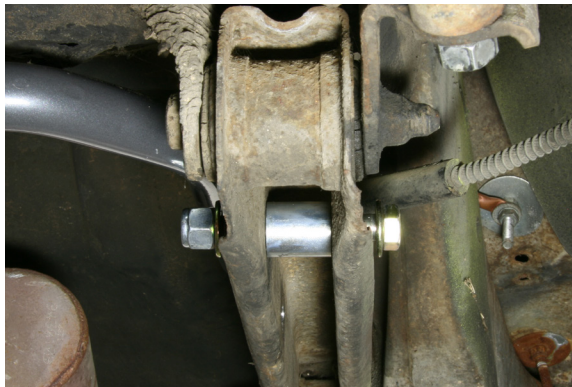


BELLTECH SWAY BAR INSTALLATION

13. Place the Belltech sway bar between the control arms again, with the brackets at the ends pointing down.



14. Place a supplied spacer tube behind each hole in the control arm.



15. Fasten the Belltech sway bar to the control arms with supplied the 1/2" bolts, Nyloc nuts, and washers. Insert the bolts from the outside toward the inside. Torque to 80 ft lbs.

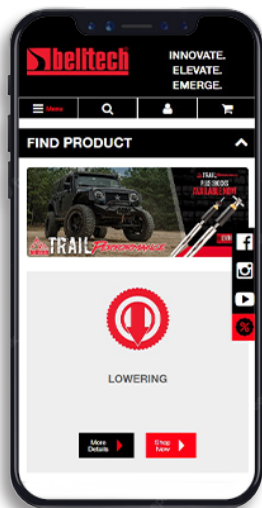


FINALIZING THE INSTALLATION

16. Mount the wheels and tighten the lug nuts
17. Lift the vehicle and remove the support stands.
18. Carefully lower the vehicle onto flat ground.
19. Torque the lug nuts to 80 ft lbs.
20. Check that all components and fasteners have been properly installed and torqued.
21. Read and perform all tasks in the “Before Driving Your Vehicle” section of page 1 of your instructions.

THANK YOU FOR CHOOSING BELLTECH.

You are now a part of the Belltech family and we are eager to catch a glimpse of your newly modified vehicle. Give us a shout out and let us know how much you love our product. Don't forget, we offer other Belltech related merchandise for you and your vehicle on our website www.belltech.com



belltechsuspension



Belltech Suspension



@belltechsuspension

If you have any questions, concerns, or warranty related issues regarding your Belltech product, please call or email our experienced customer service specialists.

Belltech Customer Support:

Phone: 1-800-445-3767

Email: info@belltech.com

KIT CONTENTS



SWAY BAR KIT		
Part number	Description	Qty
51050-300	1-1/8" REAR ANTI-SWAY BAR	1
51050-777	HARDWARE KIT	1

HARDWARE KIT		
Part number	Description	Qty
110403	1/2"-20 NYLOC NUT	4
112226	1/2"-20 X 3-1/4" BOLT	4
110660	1/2" WASHER	8
112434-95	1" SPACER	4



KW automotive North America, Inc.

300 W. Pontiac Way

Clovis, CA 93612

Phone: +1-559-875-0222

Toll Free: 1-800-445-3767

belltech.com

